



# SPEED. TRUST. RESULTS.

When time matters most, National EMR delivers the people, platforms, and proven solutions states need to respond fast and recover stronger.

As the nation's trusted response partner, we offer scalable and turnkey emergency management services that strengthen state readiness, recovery and resilience.

**"SPEED AND TRUST DEFINE US, AND THAT'S WHAT WE DELIVER."**

## 30+ Years

RESPONDING TO EVERY MAJOR U.S. DISASTER  
AND INTERNATIONAL MISSIONS.

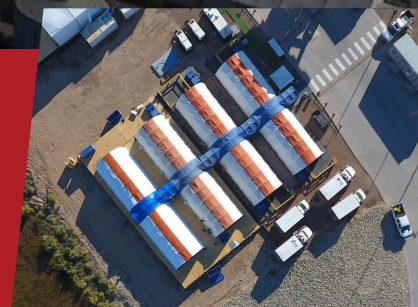
## 12–48 hours

DEPLOYMENT USING OWNED ASSETS  
AND PRE-POSITIONED TEAMS.

## WHAT WE DO – MISSION-ALIGNED CAPABILITIES

### OUR CAPABILITIES

- » **Base Camps & Responder Housing:** Full-service sleeping quarters, meals, power, sanitation, and communications for responders.
- » **Mass Care Sheltering:** General population shelter operations at scale, including staffing, logistics, and survivor support.
- » **Medical Sheltering & ER Surge Augmentation:** Licensed medical professionals and clinical support services to staff shelters and assist hospitals during surges.
- » **Mobile Medical Units (MMUs):** Responder fleet of ambulances, MMU, and fire apparatus to support medical surge and responder health needs.
- » **Crisis Response Teams:** Trauma-informed teams supporting both survivor recovery and responder wellness.
- » **Individual Assistance & Survivor Services:** Experienced case managers and licensed crisis counselors delivering direct survivor outreach and temporary housing recovery.
- » **Field Logistics Support:** Turnkey infrastructure for power, water, fuel, HVAC, communications, food service, and sanitation.
- » **Mobile Command & Coordination Assets:** Mobile units and fully equipped coordination platforms to support field incident management.



**More than resources, National EMR delivers mission ready results, ensuring communities recover stronger.**



# CAPABLE. RESPONSIVE. RELIABLE.

## WHY STATES TRUST NATIONAL EMR

Our owned fleet and gear means we deploy immediately – no vendor delays, no waiting for approval chains.



OPERATED BY  
CAREER EMERGENCY  
MANAGERS



UNINTERRUPTED  
STATE SUPPORT



MISSION-FIRST  
MINDSET, ALWAYS

## TESTED IN THOUSANDS OF TYPE I, II & III DEPLOYMENTS

Each a testament to trust, scale, and execution—nationwide and abroad.

- » **Hurricanes Katrina, Rita, Harvey & Beryl:** Shelter, medical surge, and logistics support in multi-state operations
- » **COVID-19 Response:** 70+ mobile medical units, 200+ locations, 10,500 responders deployed
- » **Wildfires – California & Texas:** Rapid deployment for survivor support, mass care, and emergency logistics under austere conditions.
- » **OCONUS & International Missions:** Field operations in Ukraine, Haiti, Puerto Rico, and Sri Lanka—executed at the same level states trust at home

## RECOVERY SERVICES

- » **Disaster Case Management (DCM):** Trained case managers and recovery navigators with trauma-informed care.
- » **Crisis Counseling Program (CCP):** Trained professionals and mobile teams deliver trauma-informed care when communities need it most.
- » **Disaster Recovery Center (DRC) Operations:** End-to-end support, from intake to survivor navigation.
- » **Registration & Eligibility Support:** Staffing and digital platforms for survivor registration, triage, and follow-up.
- » **Community Outreach & Mobile Intake Units:** Multilingual teams deployed to high need communities.

## SPECIALIZED CAPABILITIES

### » PURPOSE-BUILT FOR GOVERNMENT OPERATIONS

Staffed by professionals who understand state systems, procurement processes, and operational protocols.

### » RAPID MOBILIZATION WITH FULL ACCOUNTABILITY

Own-and-operate model enables fast, self-contained deployment—backed by credentialed teams and asset tracking from day one.

### » DEPLOYABLE LEADERSHIP & STAFFED SECTIONS

From Planning and Ops to Logistics and Finance, our responders fill gaps across ICS functions—to scale instantly with credentialed, experienced personnel.

**READY TO RESPOND?** Contact our 24/7 ops. line or visit our website | [NationalEMR.US](https://NationalEMR.US) | 1 (800) 337-0373

National EMR is a tax-exempt government partner committed to efficiency and transparency, operating on a cost reimbursement model plus 10% for general and administrative expenses (G&A).

